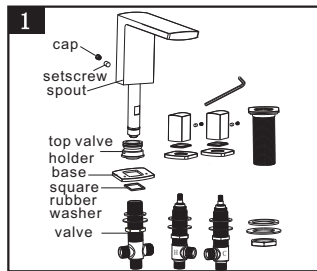
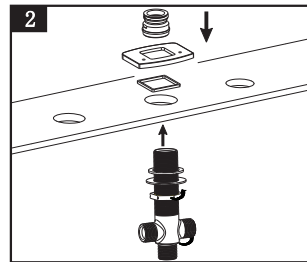


# SAPHO

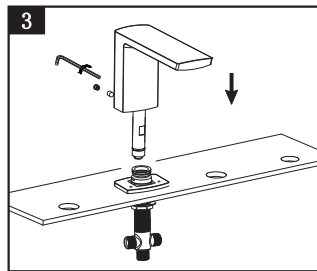
Item no  
**MG052**



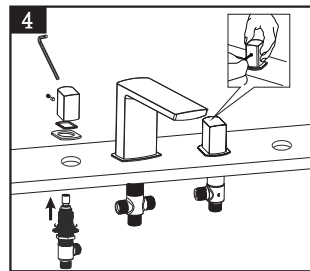
1. To Separate the spout/handle sets from valve sets by allen key orderly as drawing.



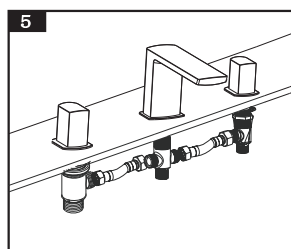
2. Make sure there are four holes in your table. Put the washer into the groove of base, put the base on the hole and adjust the position correctly, use the top valve nut to tighten the valve body. Tighten the valve with locknut of the valve bottom.



3. Install the spout through the middle hole to the connector of valve, lock it by the screw and put the cover to the screw hole.

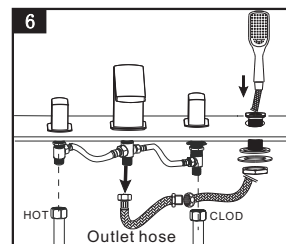


4. Install the handle valves to the hole from the bottom to the top, tighten with base from the top and tighten it with fixing part underneath. Put the handle to the cartridge spindles, locked with screw by allen key, put the cover to the screw hole



5. Connect Spout and valve by hot and cold flexible hoses

6. Left valve for connecting hot water supply, right valve for connecting cold water supply. Install the shower holder through the hole from the top, tighten it with fixing parts underneath.



7. Tighten the hand shower on the shower hose, the shower hose pass the hole on the deck, and connect with the outlet on the valve. Installation steps, check every joint to ensure it has been connected well.